

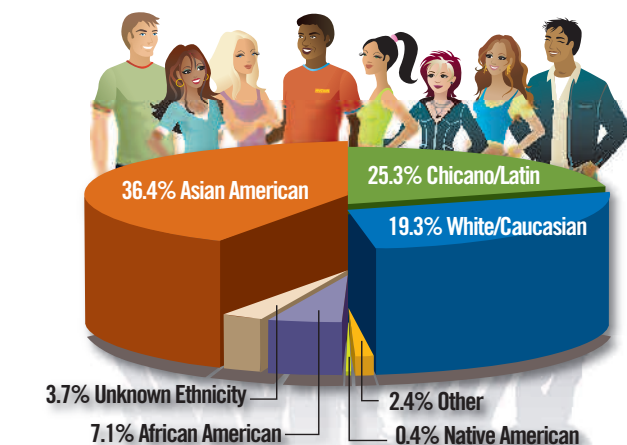
## Opportunity and Impact

UC Riverside, Inland Southern California's only public research university, offers students a broad array of exceptional academic programs in the core disciplines and in new and emerging areas of study. The rapidly growing UCR campus has a history of pioneering research with impact on the real-world economic, scientific and social challenges we face in California and throughout the world.

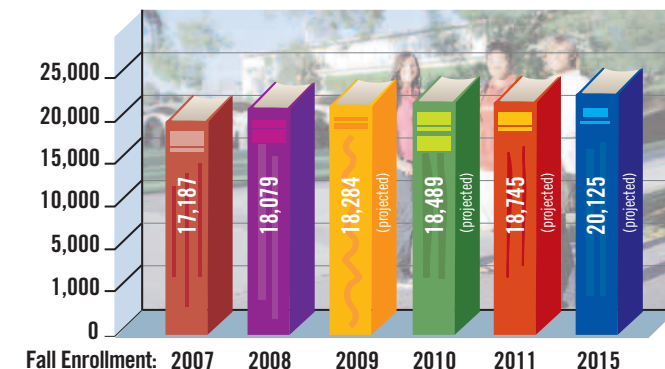
### Educating globally engaged, civic-minded leaders of the future

- Undergraduate student population ranked fifth for diversity in the U.S. News & World Report America's Best Colleges 2009 rankings, and ninth among "Up-and-Coming National Universities."
- UCR offers more than 80 undergraduate majors and 53 minors; 46 master's programs; 38 Ph.D. programs, and 17 state teaching and administrative credential programs.
- Approximately 300 UCR students are selected annually for UC's Education Abroad program which offers significant academic choices in 34 countries throughout the world at the finest universities abroad. UCR was recognized in 2008 as a top 10 university to garner the most federal Gilman scholarships for study abroad.
- More than 29,000 students annually enroll through University Extension, UCR's continuing education branch.

### Student ethnicity



### Enrollment growth



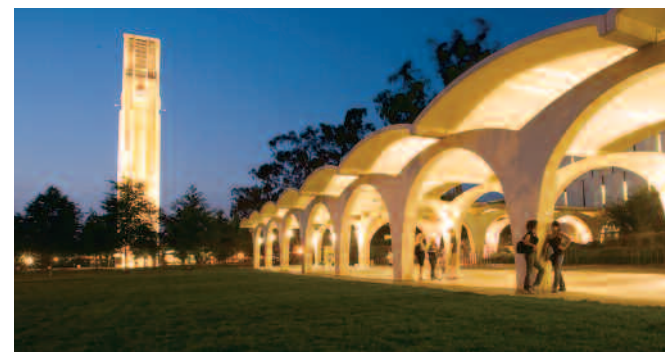
Fall Enrollment: 2007 2008 2009 2010 2011 2015  
UCR enrolled 18,079 students in fall 2008, representing 5.2 percent growth over the previous year's fall enrollment. The campus projects enrollment of more than 25,000 students in 2021.

### Promoting positive growth

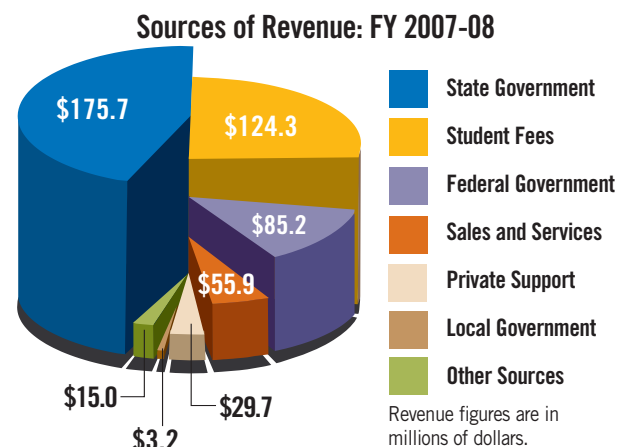
UCR has a combined economic impact in the state of California of more than \$1 billion, with nearly 72 percent of this direct, indirect and induced economic activity benefiting the Inland Empire.

UCR is a robust economic engine, and through the creation of new knowledge, it benefits the local, regional and statewide economies by providing highly skilled workers and discoveries that can be applied to new products and services.

- UCR had a \$1.1 billion economic impact in the state of California during the 2006-07 academic year.
- \$332 million, or 57 percent, of UCR's direct spending occurs in the Inland Empire.
- Spending by UCR, its students, visitors and retirees created more than 13,000 full-time jobs statewide.
- UCR is the second-largest employer in the city of Riverside and the 10th largest in the Inland Empire.
- Nearly 4,300 degrees were conferred in 2007-08, an increase of almost 10 percent over the prior year.

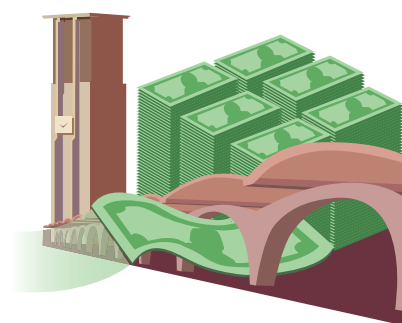


### Contributions to the local economy

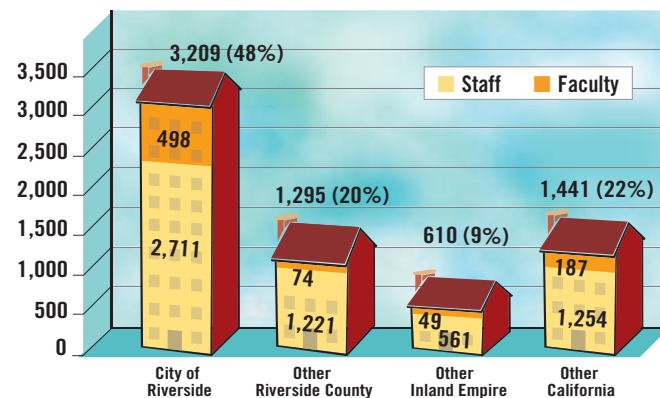


Nearly three-quarters of UCR's total revenue of \$489 million (2007-08) came from sources outside of the region, making UCR a major economic force in the Inland Empire.

UCR's 2006-07 impact of \$1.1 billion in California represents more than a six-fold return on the state's investment.



### Staff and Faculty Residency FY 2006-07

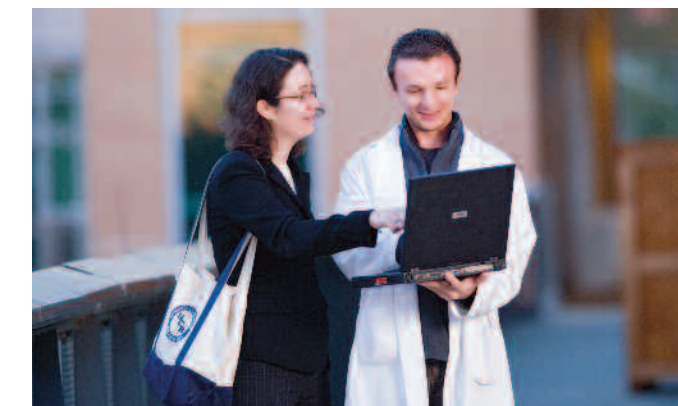


Nearly 80 percent of UCR's faculty and staff live in the Inland Empire. Among UCR alumni, 31 percent live in the Inland Empire and 81 percent in California.

## World-Class Faculty Dedicated to Learning and Scholarship

UCR faculty are national and international leaders in their fields who have a special commitment to inspire students to reach their potential. UCR's 956 instructional faculty include senior-level innovators and emerging young stars, creating a dynamic and collaborative intellectual environment.

- Seven current and former faculty have been elected to the prestigious National Academy of Sciences.
- In the past decade, 12 UCR faculty members have been awarded Guggenheim Fellowships for distinguished individual achievement and exceptional promise.
- Christopher Abani began to form one of his earlier works of poetry in an unlikely place: prison. Abani was just a teenager when his published story about a military coup led to his imprisonment by Nigeria's military regime in the 1980s. Abani is now a Professor of Creative Writing and internationally-known author of poetry, plays and prose whose writing has been hailed as "haunting and unforgettable." Abani has been awarded the Prince Claus International Writing Award, the PEN Beyond Margins Award, and the California Book Award, among many others.
- Assistant Professor Sharon Walker and the USDA-funded Bacterial Adhesion Research Laboratory explore how bacteria behave in water and attach to surfaces – key research in preventing sickness caused by "bad bacteria" in water and food. Walker also spearheads "Building Bridges Across Riverside Through Water Quality Research" and MY BEST @ UCR, which offer underrepresented local community college and university students the chance to conduct research in UCR labs and stay on track toward doctoral degrees.



## Location, Location, Location

UC Riverside, one of 10 University of California campuses, is located in the vibrant inland region of Southern California on the eastern edge of Riverside, a city of nearly 300,000 that is steeped in historical heritage and offers a dynamic blend of entertainment, arts, recreation and quality living. The UCR Palm Desert Graduate Center is situated in the heart of the Coachella Valley, a hub of cultural and recreational activity approximately 60 miles east of Riverside. Both locations are served by major airports – LA/Ontario International Airport and Palm Springs International Airport – and by major freeways.



University of California, Riverside  
900 University Ave.  
Riverside, CA 92521

[www.ucr.edu](http://www.ucr.edu)  
[www.impact.ucr.edu](http://www.impact.ucr.edu)

Contact:

UCR Office of Governmental and Community Relations, (951) 827-5184

UCR Office of Strategic Communications, (951) 827-6397

2009



## UCR Facts and Impacts

## Building for the Future

UCR is a committed partner in regional efforts to improve the quality of life. The campus is a leading source of knowledge, perspective and solutions that impact many of the challenges society faces – from education and the environment to the economy and health care.



- UCR's planned **School of Medicine** will take on the unique health challenges of a rapidly growing and diverse Inland Southern California population by helping expand the physician workforce and stimulating additional research on health-related topics. Anticipated to enroll its first students in fall 2012, the medical school will partner with community-based medical care providers, affording students experience with diverse patient populations in a variety of healthcare settings.
- UCR is taking on a host of challenges faced in any rapidly growing society with its new **School of Public Policy**. Scheduled to admit its first class in fall 2010, the school will emphasize a unique integrated social-environmental focus to serve the region as it faces problems typically associated with growth, such as suburban sprawl, congestion, air pollution, water scarcity and stress on social services. The school will offer doctoral and master's degrees, and feature degree specialization in environmental and sustainable development, population and health, higher education and immigration policy.
- Experienced managers, entrepreneurs and professionals who desire to enhance their careers and take their organizations to the next level are top candidates for UCR's new **Executive MBA program**, slated to begin in Fall 2009. The EMBA program is designed for seasoned managers with strong intellectual curiosity who wish to transition from practicing professional to general manager. The program will feature a weekend residency component to accommodate the busy lives of its working professional students.



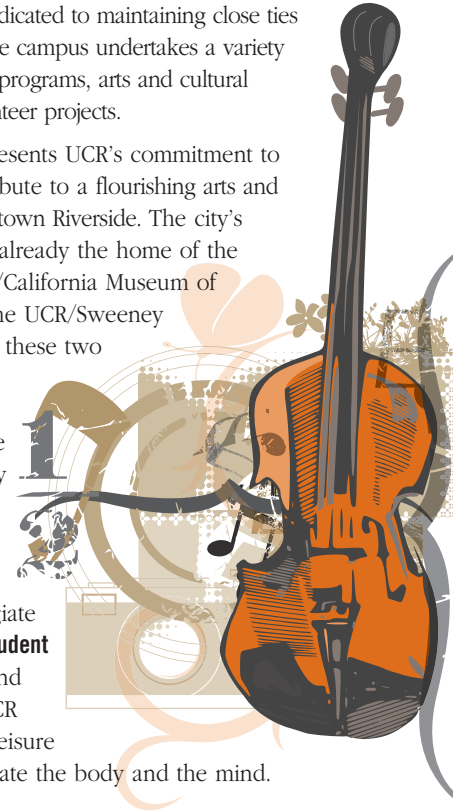
- The campus has undertaken and is planning more than **\$954 million** in capital construction between 2000 and 2010. Projects under construction this year include the Barbara and Art Culver Center of the Arts, Material Sciences and Engineering, and Commons Phase II.



## Community Ties

In addition to its commitment to high-quality education and research, UCR is dedicated to maintaining close ties with the community. The campus undertakes a variety of community outreach programs, arts and cultural presentations, and volunteer projects.

- The **ARTSblock** represents UCR's commitment to enhance and contribute to a flourishing arts and cultural life in downtown Riverside. The city's Main Street mall is already the home of the world-famous UCR/California Museum of Photography and the UCR/Sweeney Art Gallery. Joining these two institutions will be the Barbara and Art Culver Center of the Arts to host a variety of cultural and arts events.
- Through its **NCAA Division I** intercollegiate sports programs, **Student Recreation Center** and **Botanic Gardens**, UCR offers a variety of leisure activities to rejuvenate the body and the mind.



The UCR Women's Cross Country team brought home the Big West Championship in 2008. Coach Irv Ray was named Women's Coach of the Year.



## Serving the public

UCR's service-centered students, faculty and staff undertake activities that enhance community life and develop solutions that shape the way businesses and industries succeed.

- With more than 100 years of **service to agriculture**, UCR sustains its land grant mission, in part, through Cooperative Extension, which applies research-based knowledge to advance California's \$32 billion agricultural industry and to improve environmental quality.
- The **University Eastside Community Collaborative** is a 13-year partnership with the Riverside Unified School District and city of Riverside to provide tutorial services and enrichment activities to economically disadvantaged youth in the greater Riverside area. Nearly 1,000 UCR students have participated as volunteers.
- Funded by the Maxwell H. Gluck Foundation, the **Gluck Fellows Program of the Arts** brings arts-related presentations, performances, and workshops to Riverside County schools, residential facilities for elderly care and community centers. Nearly 120 graduate, undergraduate and faculty fellows participated in the program in 2007-08.



## Discovery and Innovation

UCR research advances understanding of the human, social, scientific and economic issues facing society and leads to practical innovations that may form the basis of new or expanding business enterprises.

- UCR faculty were awarded \$104.7 million in research funding in 2007-08, with the majority of funding awarded by federal agencies such as the National Science Foundation and the National Institutes of Health.
- Collaborative and interdisciplinary research is conducted through research centers that bring together like-minded faculty and students to tackle large scientific and social issues.
  - The **College of Engineering-Center for Environmental Research and Technology (CE-CERT)** leads a broad program of research and technology development on the relationship between transportation and air quality.
  - The **Center for Nanoscale Science and Engineering** focuses on the technologies and unique applications of material at the nano scale, which are expected to lead to revolutionary advances in electronics, computing and medicine, among other fields.
  - The new **SEARCH family autism resource center** is the first center in the UC system to focus on education and advocacy for parents who are trying to navigate the maze of autism services, including those who are low-income and Spanish-speaking.
  - The **Edward J. Blakely Center for Sustainable Suburban Development** helps regional leaders and policy makers design and plan for greener communities as suburbs mature as a staple of American life.



- UCR research discoveries help industries, such as agriculture, remain competitive and stimulate development of **new technologies**. Recent innovations emerging from campus research include the seedless, high-yield Tango variety of mandarin; more durable and economical fuel cells with the capacity to power cars and leave behind only water "exhaust"; an inexpensive and waste-free method of developing amines for wide-spread industrial and commercial use; and a new variety of cowpea which is highly nutritious and resistant to diseases, pests and drought with potential use in developing nations.
- The **University Research Park**, a partnership between the city and county of Riverside and UCR to create a supportive "campus" for new technology businesses, is home to several young companies, including Surado Solutions, Ambryx Biotechnology, and Microbac Laboratories, Inc.

## Research Funding Awarded: FY 2008

